
DENNIS

DENNIS UNIFORM MANUFACTURING COMPANY

1282 Oddstad Drive, Redwood City, CA 94063

Phone: (650) 299-9623 · (800) 854-6951 Fax: (650) 299-9624

order online www.dennisuniform.com

National Customer Service 800.854.6951

WELCOME TO DENNIS

We look forward to working with you this year! Since 1920, DENNIS has sewn the best uniforms available in our Portland, Oregon factory. We are a family-owned business committed to quality, customer service, and education. Our goal is to have every student in uniform by the first day of school. If you need any help, please do not hesitate to contact our National Customer Service Department 800.854.6951.

EASY WAYS TO SHOP

- ◆ Store, online, phone/fax/mail order.
- ◆ DENNIS accepts Visa, Mastercard, Discover & checks in US Dollars.
- ◆ Call National Customer Service for custom garments.

ORDER ONLINE

- ◆ www.dennisuniform.com
- ◆ Enter school code: **MZ5NOT**

NATIONAL CUSTOMER SERVICE

800.854.6951 fax 877.291.5480

Hours: Monday-Friday 8am-5pm PST

Extended summer hours

EVENTS

Customer Appreciation Event-at the Redwood City Store 10% off

Thursday, July 15, 2010 from 10am-6pm

RETURNS & EXCHANGES

DENNIS guarantees the quality of workmanship and fabrics on all garments.

Merchandise will be accepted for return or exchange within 60 days.

Merchandise must be accompanied by sales receipt, be unworn, unwashed, and unaltered, with tags intact.

There are no returns or exchanges on custom items.

Returns / exchanges / defective garments accepted at any branch store, or by mailing to:

DENNIS Uniform, 135 SE Hawthorne Blvd,
Portland, Oregon 97214

National Customer Service 800.854.6951

UNIFORM PRICING EFFECTIVE MAY 1, 2010

REDWOOD CITY STORE

650.299.9623 fax 650.299.9624

STORE HOURS

Tue-Fri 10am – 5pm
Sat 10am – 2pm
Labor Day 10am – 2pm

**SUMMER HOURS:

August only

Mon 10am – 6pm
Tue-Sat 10am – 5pm
Closed Sunday

DIRECTIONS

DENNIS faces Hwy 101.

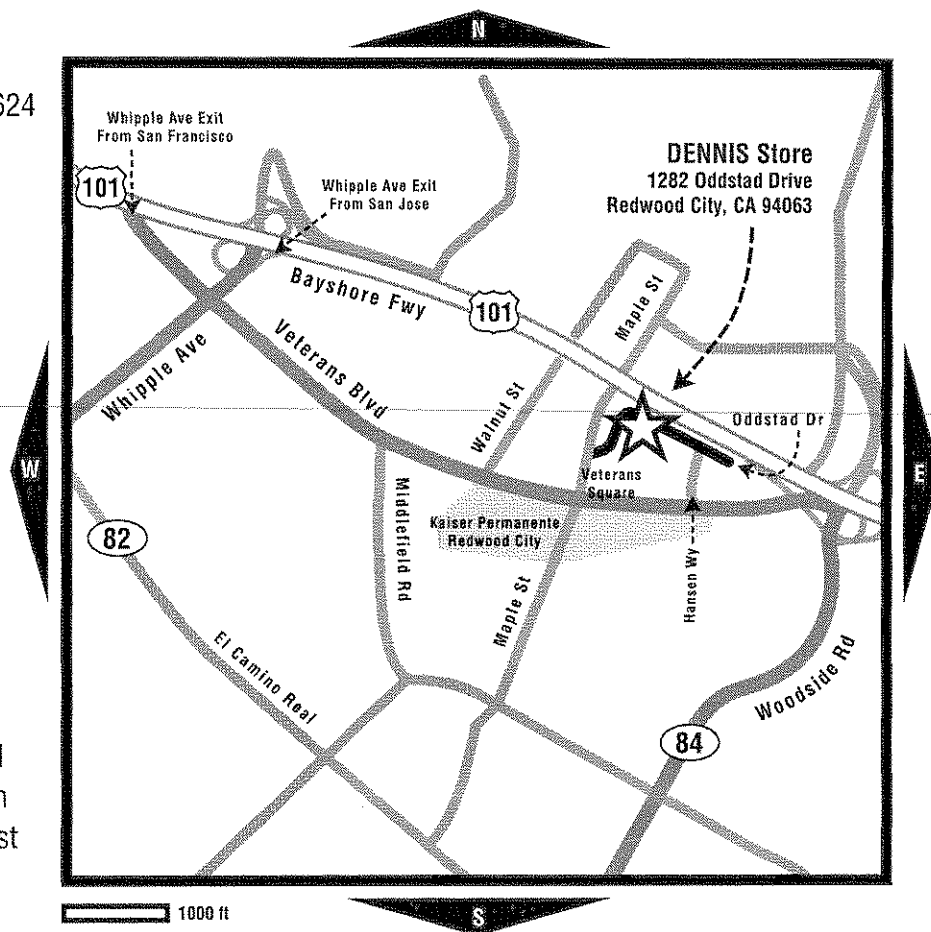
From southbound Hwy 101, exit Whipple Ave, which becomes Veterans Blvd, head east for two miles. Turn north (left) onto Maple St. Head east (right) on Oddstad Dr.

From northbound Hwy 101, exit Woodside Road (#408/ West CA 84) and turn west (right) onto Veterans Blvd. Turn north (right) onto Maple St. Head east (right) on Oddstad Dr.

From Hwy 280, exit Woodside Rd (CA 84) and turn east-bound on Woodside Rd. Travel approximately 4 miles. Turn west (left) onto Veterans Blvd. Turn north (right) onto Maple St. Head east (right) on Oddstad Dr.

DENNIScrip & Gift Scrip

- DENNIScrip may be used at DENNIS locations, in-school sale events, and mail order. Excludes online and phone.
- Maximum change made is \$5.
- DENNIScrip is not returnable or refundable for dollars
- DENNIScrip is good forever!



DENNIS PROMOTIONS

September through May 2009-2010 · Advantage Card

Earn fifteen \$10 stamps on your DENNIS advantage card and save \$10 on your next in-store purchase.

January 2010 · Happy New Year's Savings

10% savings on all purchases & orders. . .phone, mail, internet and in-store.*

March 2010 · Double Punch Month

Every \$10 purchase worth two stamps on DENNIS Advantage Card.

June 10-July 10, 2010 · Early Bird Sale

10% savings on all purchases. . .phone, mail, internet and in-store.*

September through May 2010-2011 · Advantage Card

Earn fifteen \$10 stamps on your DENNIS advantage card and save \$10 on your next in-store purchase.

WATCH FOR OUR INTERNET SPECIALS!

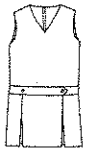
*excludes marked down items

NOTRE DAME ELEMENTARY SCHOOL

School Code: MZ5NOT

1200 Notre Dame Avenue; Belmont, CA 94002

Girls, grades: 1-5 SHIFTS

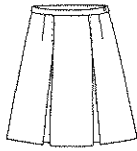


Girls 3-20	\$42.75
Girls 6½-16½	\$43.75

Item #: 011130-201

Grant Plaid-Center box pleat (300)

Girls, grades: 6-8 SKIRTS



Girls 3-20	\$40.50
Girls 6½-16½	\$41.50
Juniors 1-19	\$42.50
Juniors 21-25	\$42.50

Item #: 008680-201

Grant Plaid-Center box pleat (300)

Girls, grades: 1-6 BLOUSES



Youth 4-16	\$15.50
Adult S-2XL	\$16.50

Item #: 00080A-911

White BC S/S-Peter Pan Collar (119)

Girls, grades: 7-8 BLOUSES

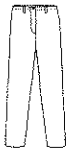


Youth 3-16	\$16.50
Adult S-3XL	\$17.50

Item #: 01227A-911

Overblouse-White S/S-Peter Pan Collar (119)

Girls, grades: 1-8 PANTS



Reg 3-6X	\$23.50
Reg 7-20	\$25.50
Juniors 1-19	\$29.50
Juniors 21-25	\$29.50

Item #: 040300-965

Girls Navy Twill-Flat Frt (069)

Girls, grades: 1-8 PANTS

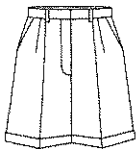


Reg 3-6X or Slim 3-6	\$22.00
Reg 7-20 or Slim 7-16	\$24.00
Girls 22-24	\$24.00
Girls 6½-16½	\$24.00
Juniors 1-19	\$28.00

Item #: 040400-965

Girls Navy Twill-Plt Frt (069)

Girls, grades: 1-8 WALK SHORTS



Girls 3-6X	\$18.00
Girls 7-20	\$20.50
Girls 22-24	\$20.50
Girls 6½-16½	\$21.50
Juniors 1-19	\$25.00

Item #: 040500-965

Girls Navy Twill 60C/40P-Plt Frt (069)

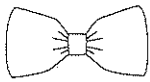
Girls, grades: 1-8 ACCESSORIES



One size	\$4.75
----------	--------

Item #: 004880-201

Padded Headband-Grant Plaid (300)

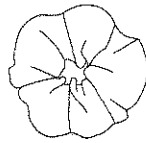
Girls, grades: 1-8 ACCESSORIES

One size

\$3.75

Item #: 005070-201

Hairbow-Grant Plaid (300)

Girls, grades: 1-8 ACCESSORIES

One size

\$4.75

Item #: 005090-201

Scrunchy-Grant Plaid (300)

Girls, grades: 1-8 ACCESSORIES

Sizes S-M-L-XL

\$3.50

Item #: 047200-900

Bobby Socks/Triple Roll-Navy (067)

Bobby Socks/Triple Roll-White (119)

Optional

Girls, grades: 1-8 ACCESSORIES

Sizes S-M-L-XL

\$3.75

Item #: 047300-900

Knee-Hi Cable Knit-Navy (067)

Knee-Hi Cable Knit-White (119)

Optional

Girls & Boys, grades: 1-7 SWEATSHIRT 9oz

Youth XS-XL

\$20.00

Adult S-2XL

\$23.00

Item #: 090000-MZ5

Royal Crew Neck w/Notre Dame Elem Embr (103)

Extra charge for student name; call store for details; child's first or last name

Girls & Boys, grades: 1-8 FLEECE JACKET

Youth 2XS-XL

\$43.00

Adult S-2XL

\$52.00

Item #: 052000-MZ5

Royal Fleece w/Notre Dame Elem Embr (103)

By Order Only-extra fee for FIRST or LAST NAME

Girls & Boys, grades: 1-8 ACCESSORIES

Sizes XS-XL

\$3.00

Sizes 2XL

\$5.00

Item #: 011510-900

Sport Sock-White (119)

Girls & Boys, grades: 1-8 ACCESSORIES

Sizes XS-XL

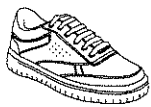
\$4.50

Sizes 2XL

\$5.50

Item #: 011510-MNT

Sport Sock-White w/Notre Dame emblem (119)

Girls & Boys, grades: 1-8 UNISEX SHOES

Youth 8½-13½	\$35.50
Youth 1-6	\$35.50
Adult 6½-12	\$43.25

Item #: 00685M-900

Unisex casual shoes-med width-Black (007)

Unisex casual shoes-med width-White (119)

Optional

Girls & Boys, grades: 1-8 UNISEX SHOES

Youth 8½-13½	\$35.50
Youth 1-6	\$35.50
Adult 6½-12	\$43.25

Item #: 00685W-900

Unisex casual shoes-wide width-Black (007)

Unisex casual shoes-wide width-White (119)

Optional

Boys, grades: 1-8 POLO

Youth 2XS-XL	\$15.50
Adult S-3XL	\$17.50

Item #: 08300A-973

White Jersey S/S (119)

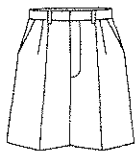
Boys, grades: 1-8 PANTS

Reg 3-7 or Slim 3-7	\$24.00
Reg 8-16 or Slim 8-16	\$28.00
Husky 25-38	\$33.50
Prep 27-32	\$31.00
Mens 33-44	\$34.50

Item #: 072000-919

Navy 14 Wale Cord-Plain Frt-DENNIS Durables (067)

Must be narrow wale only, no widewale

Boys, grades: 1-8 WALK SHORTS

Reg 3-7 or Slim 3-7	\$18.50
Reg 8-16 or Slim 8-16	\$22.00
Husky 26-38	\$26.00
Prep 26-32	\$26.00
Mens 33-44	\$26.50

Item #: 040600-964

Boys Navy Rassler Twill Pltd Frt (067)

Boys, grades: 1-8 ACCESSORIES

Sizes S-M-L-XL	\$3.50
----------------	--------

Item #: 047100-900

Crew Socks Cotton-Navy (067)

Crew Socks Cotton-White (119)

Optional

EVENTS

Customer Appreciation Event-at the Redwood City Store 10% off

Thursday, July 15, 2010 from 10am-6pm

12-Mar-10

School Code: MZ5NOT

0.0925

Girls' Jumpers, Skirts & Skorts, Pants & Walk shorts

students' body measurements

size	chest	waist	hip	skirt length	length by style				
					3521 skort length*	ankle-length skirt	walk shorts length	4040 pants inseam	4030 flat-front pants inseam
G3	23	21	24	11	10.25	—	10.25	15.25	19.25
G4	24	22	25	12	10.75	—	11	16.75	20.25
G5	24.5	22.5	26	13	11.5	—	11.75	18.5	21.25
G6	25	23	26.5	14	12	—	12.5	20.25	22.25
G6x		23.5	27		12.75	—	13.25	22	23.25
G7	26	23.5	27.5	15	14.75	28.5	14	24	24
G8	27	24	28.5	16	15.25	29.5	14.75	25.5	25.5
G10	29	25	30.5	17	15.75	30.5	15.5	26.5	27.75
G12	30.5	26	33	18	16.5	31.5	16.5	27	28.25
G14	32	27	35	19	17	32.5	17.5	27.75	29
G16	34	28	37	20	17.75	33.5	18.25	28	29.25
G18	36	29	39	20	18.5	33.5	19	28	29.25
G20	38	30	41	20	18.75	33.5	19.25	28	29.25
Half (plus) sizes									
H6.5	27	25	28.5	14	12.75	—	12.5	20.25	—
H8.5	29	26	30.5	16	15.25	—	14.75	25.5	—
H10.5	31	27	32.5	17	15.75	—	15.5	26.5	—
H12.5	32.5	28	35	18	16.5	—	16.5	27	—
H14.5	34	29	37	19	17	—	17.5	27.75	—
H16.5	36	30	39	20	17.75	—	18.25	28	—

*3550 longer skort measures 3" longer

Girls' **Pleat-front Pants** (#4040) are available in slim sizes. Slim sizes run 2" smaller in waist and hips than regular sizes and are available in sizes S4, S6, S7, S8, S10, S12, S14, S16.

Junior Skirts & Skorts

students' body measurements length by style

junior size	waist	hip	skirt length	length by style				
				3521 skort length*	ankle-length skirt	walk shorts length	4040 pants inseam	4030 flat-front pants inseam
J1	25	35.5	19	17.5	35	16.25	30.75	32.25
J3	26	36.5	19	17.75	35	16.5	30.75	32.25
J5	27	37.5	19	18	35	16.75	31	32.5
J7	28	38.5	20	18.25	35	17	31.25	32.5
J9	29	39.5	20	18.5	35	17.25	31.25	32.75
J11	30	40.5	20	18.75	35	17.5	31.25	32.75
J13	31.5	42	20	19	35	17.75	31.25	32.75
J15	33	43.5	21	19.25	35	18	31.5	33
J17	34.5	45	21	19.5	35	18.25	31.5	33
J19	36	46.5	21	19.75	35	18.5	31.75	33.25

*3550 longer skort measures 3" longer

Socks

sock size shoe size

S	youth 7-10.5
M	youth 10.5-adult 3
L	adult 4-8
XL	adult 10-13

Youth Cable Tights

youth size	height	weight
S	41-49"	42-56#
M	49-56"	50-80#
L	52-60"	70-105#

Youth Nylon Tights

youth size	height	weight
XS	36-40"	35-50#
S	41-46"	50-65#
M	46-50"	65-80#
L	51-55"	80-96#
XL	56-60"	96-105#

Junior Nylon Tights

junior size	height	weight
S/M	5'-5'4"	85-120#
M/Tall	5'4"-5'8"	115-140#

Girls' Blouses*

size	blouse chest	butterfly/camp shirt chest only	wing collar blouse
G3	22	23	—
G4	23	24	—
G5	—	24.5	—
G6	24	25	—
G6x	—	25.5	—
G7	—	26	—
G8	25	27	—
G10	27	29	29
G12	29	30.5	30.5
G14	31	32	32
G16	33	34	34

* order the same size as jumper or skirt

Juniors' & Women's Blouses

junior size	camp shirt/wing collar blouse chest	women's size	chest blouse
J1	34	S	30-32
J3	35	M	34-36
J5	36	L	38-40
J7	37	XL	42-44
J9	38	2XL	46-48
J11	39	3XL	50-52
J13	40.5		
J15	42		
J17	43.5		
J19	45		

Girls' Polo Shirt*

size	chest	length of garment
2XS	22	16
XS	24	17
S	26	18
M	27	19.5
L	29	21
XL	31	22

Juniors' Polo Shirt*

size	chest	length
XS	35	23.5
S	37	24.5
M	39	25
L	41	26
XL	44	26.5
2XL	47	27

*garment is styled to have a trim fit

Boys' Pants & Walk shorts*

boys' size	waist	short length	pant inseam
3	21.5	12	14.5
4 slim	20	—	16
4	22	12.5	16
5 slim	20.5	—	17.5
5	22.5	13	17.5
6 slim	21	—	19.5
6	23	13.5	19.5
7 slim	21.5	—	20
7	23.5	14	20
8 slim	22	—	21.5
8	24	15	21.5
9 slim	22.5	—	23
9	24.5	—	23**
10 slim	23	—	24
10	25	16.5	24
11 slim	23.5	—	25**
11	25.5	—	25
12 slim	24	—	26.5
12	26	17.25	26.5
14 slim	25	—	28
14	27	17.75	28
16 slim	26	—	29.5
16	28	17.25	29.5

* sizes 4-10 have elastic in back waistband

** sizes 9 & 11 not available in 7900 & walkshorts

Husky/Prep Pants & Walk shorts

waist size	husky shorts* length	prep shorts length	husky pants inseam	prep pants inseam
26	14.25	19**	21.5	—
27	15.75	19	22.5	32
28	16.25	19.25	24	32
29	16.75	19.5	25.5	32
30	17.25	19.75	27	32
31	17.75	20	27.5	32
32	18.25	20.25	28.5	32
33***	18.75	20.5	29.5	36
34	19.25	20.75	29.5	36
36	19.75	21.25	30.5	36
38	—	21.75	31.5	36
40	—	22.25	—	36
42	—	22.5	—	36
44	—	22.75	—	36

* husky sizes have elastic in waistband

** twill walk shorts only

*** waist size 33" and up are 36" unhemmed

T-Shirts, Jackets

& Sweatshirts		
youth size	t-shirts garment size	jackets/sweatshirts garment size
XS	N/A	2-4
S	6-8	6-8
M	10-12	10-12
L	14-16	14-16
XL	N/A	18-20
adult size	garment size	
S	34-36	
M	38-40	
L	42-44	
XL	46-48	

Gym Shorts & Sweatpants

youth size	gym shorts waist	sweatpants waist
S	21-22	22-24
M	23-24	24-26
L	25-26	26-28
adult size	gym shorts waist	sweatpants waist
XS	24-26	N/A
S	28-30	30-32
M	32-34	34-36
L	36-38	38-40
XL	40-42	42-44

Pull-on Pants & Shorts

youth size	waist	pants inseam
2XS	21-22	16
XS	22-23	19
S	23-24	22
M	25-26	25
L	27-28	27
XL	29-30	28
adult size	waist	pants inseam
XS	25-27	31.5
S	28-30	32
M	31-33	32.5
L	34-36	33
XL	37-39	33.5
2XL	40-42	34

Shirts

youth size	chest
4	22
6	24
8	26
10	28
12	30
14	32
16	34
18	36
20	38
adult size	neck
S	14.5
M	15.5
L	16.5
XL	17.5
2XL	18.5

Knit Shirts

youth size	chest
2XS	25
XS	27
S	29
M	32
L	36
XL	38
adult size	chest
S	38
M	42
L	46
XL	50
2XL	54
3XL	58

Sweaters*

youth size	chest
2XS	25
XS	28
S	31
M	34
L	37
XL	40
adult size	chest
S	40
M	43
L	46
XL	49

* order sweater one size larger than blouse or shirt size.

MEASUREMENTS

Measurements on chart are body measurements

chest/bust:	measure the fullest part
waist:	measure at the traditional waist, the narrowest part of the waist—all styles are sized based on this measurement.
hips:	stand heels together; measure fullest part
rise:	measure bottom of waistband at the back around crotch to bottom of waistband front
waist length:	measure from nape of neck to waist
inseam:	measure from crotch to top of shoe
skirt length:	measure from bottom of waistband

SPECIAL SIZES require these measurements

jumpers:	bust/ waist/ hip/ skirt length/ waist length
skirts/skorts:	waist/ hip/ skirt length
pants:	waist/ hip/ inseam
walk shorts:	waist/ hip/ walk short length

update 11/07

